



RMS Integrated Solutions Ltd



Ontario Tower

The Task

Ontario Tower is a luxury high-rise residential development in London's Docklands and is the tallest riverside residential building in London. The development was built as part of a wider scheme in New Providence Wharf to provide new executive housing to meet changing demand in the Docklands area.

The design both commemorates the tall industrial chimneys that were once such a feature of this part of London and evokes the funnels of the transatlantic liners that used to pass the building on their way into or out of London.

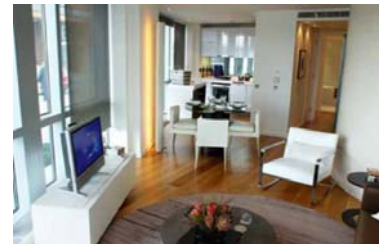
RMS Integrated Solutions Ltd. were awarded a contract to design and install a Sky and T.V. Satellite distribution system throughout the tower to all 271 apartments in the 29 storey building to include distributing the signals from each apartment lounge to the apartment bedrooms.

During the construction process a complication arose due to the fact that the architects did not wish to see any obstructions on the slanted roof area which may ruin the visual effect. RMS technicians solved this problem by installing the aerial and satellite dish array on the roof of an adjacent tower which proved most successful whilst maintaining the visual integrity of the building.

RMS Integrated Solutions Ltd. were also awarded the contract to design and install voice/data distribution throughout the tower.

RMS Integrated Solutions Ltd. completed the project on time and to budget

PROJECT PROFILE



CLIENT:

Briggs & Forrester

SERVICES:

- T.V. Satellite Distribution System
- Voice/Data Distribution System

PROJECT VALUE:

Circa £120,000

TYPE:

High Rise Residential

ARCHITECTS:

Skidmore Owings & Merrill

DEVELOPER:

Bellymore Properties Ltd.

COUNTRY:

United Kingdom